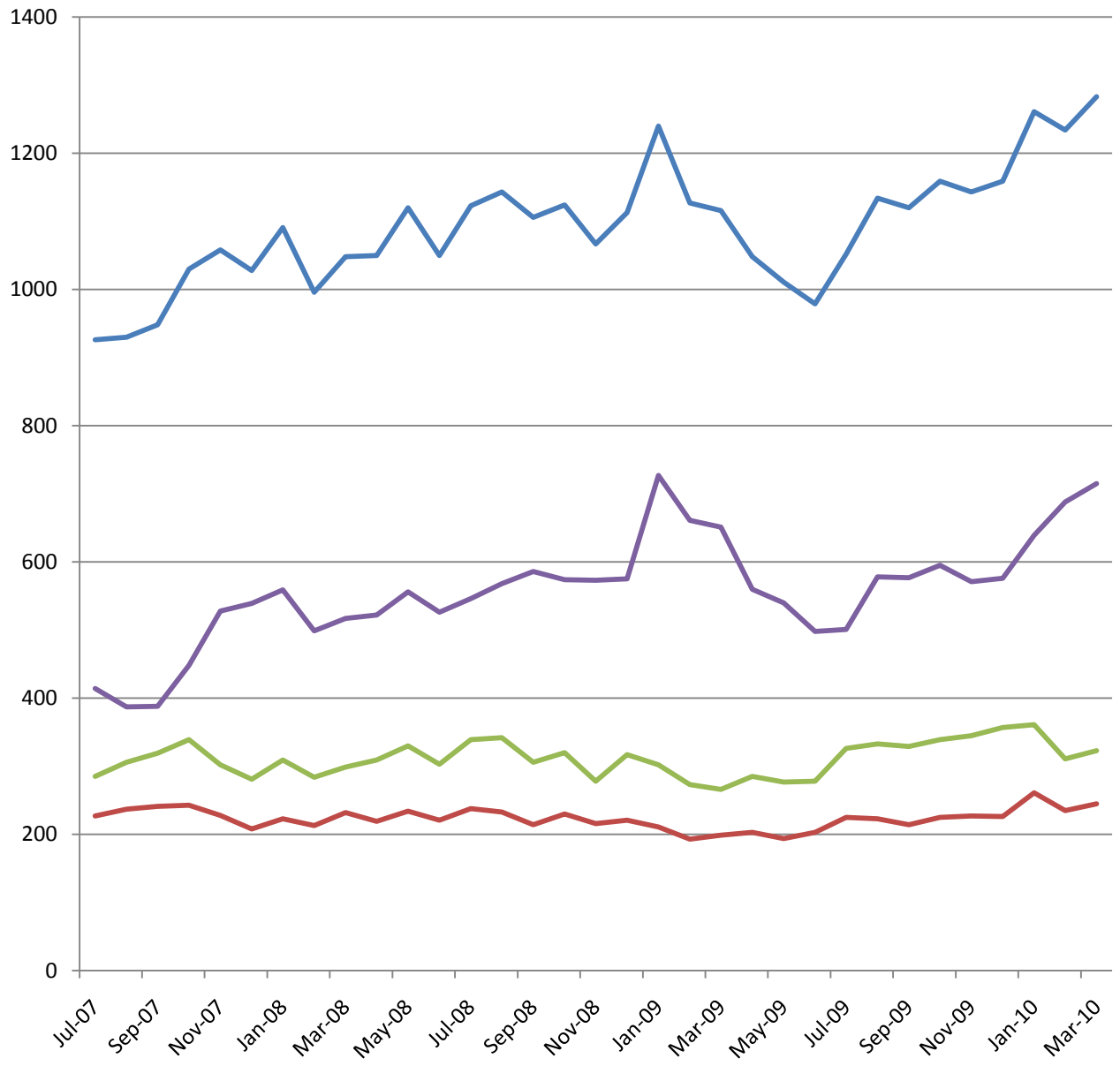


Trends in Emergency Shelters and Transitional Housing in Rhode Island
July 2007 to March 2010

	<u>Total Homeless</u>			
	<u>Individuals</u>	<u>Adults in Families</u>	<u>Children</u>	<u>Single Adults</u>
Jul-07	926	227	285	414
Aug-07	930	237	306	387
Sep-07	948	241	319	388
Oct-07	1030	243	339	448
Nov-07	1058	228	302	528
Dec-07	1028	208	281	539
Jan-08	1091	223	309	559
Feb-08	996	213	284	499
Mar-08	1048	232	299	517
Apr-08	1050	219	309	522
May-08	1120	234	330	556
Jun-08	1050	221	303	526
Jul-08	1123	238	339	546
Aug-08	1143	233	342	568
Sep-08	1106	214	306	586
Oct-08	1124	230	320	574
Nov-08	1067	216	278	573
Dec-08	1113	221	317	575
Jan-09	1240	211	302	727
Feb-09	1127	193	273	661
Mar-09	1116	199	266	651
Apr-09	1048	203	285	560
May-09	1011	194	277	540
Jun-09	979	203	278	498
Jul-09	1052	225	326	501
Aug-09	1134	223	333	578
Sep-09	1120	214	329	577
Oct-09	1159	225	339	595
Nov-09	1143	227	345	571
Dec-09	1159	226	357	576
Jan-10	1261	261	361	639
Feb-10	1234	235	311	688
Mar-10	1283	245	323	715



Homelessness in Rhode Island

July 2007 - March 2010

- Total Homeless Individuals
- Adults in Families
- Children
- Single Adults